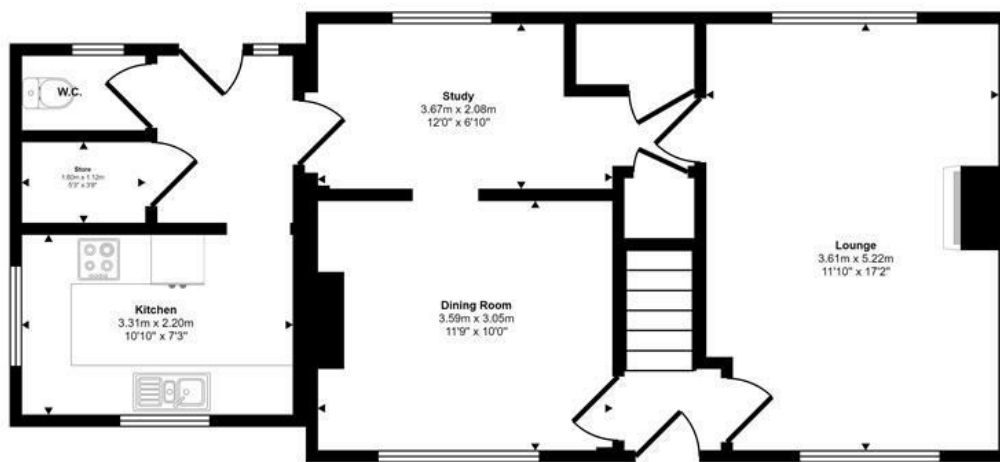




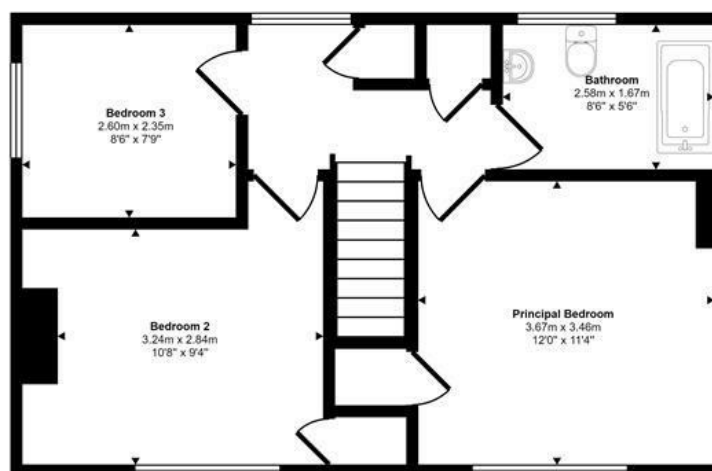
Hingham Road | Attleborough | NR17
 Guide Price £300,000

abbotFox

Approx Gross Internal Area
 105 sq m / 1133 sq ft



Ground Floor
 Approx 60 sq m / 650 sq ft



First Floor
 Approx 45 sq m / 482 sq ft

This floorplan is only for illustrative purposes and is not to scale. Measurements of rooms, doors, windows, and any items are approximate and no responsibility is taken for any error, omission or mis-statement. Icons of items such as bathroom suites are representations only and may not look like the real items. Made with Made Snappy 360.

Energy Efficiency Rating		
	Current	Potential
Very energy efficient - lower running costs		
(92 plus) A		
(81-91) B		
(69-80) C		70
(55-68) D		
(39-54) E	43	
(21-38) F		
(1-20) G		
Not energy efficient - higher running costs		
England & Wales	EU Directive 2002/91/EC	

Disclaimer – In accordance with the Property Misdescriptions Act, the company gives notice that all descriptions, references to condition, necessary permissions for use and other details are given in good faith and believed to be correct, but any intending lessees do not rely on them as statements of fact, but must satisfy themselves by inspection or other means, as to their accuracy.



abbotFox presents this generously proportioned, three bedroom, semi-detached house. Occupying a generous plot, which affords a high degree of privacy, this home offers an abundance of potential. Internally, the accommodation is neatly arranged and comprises; entrance hall, lounge, dining room, study, rear lobby, cloakroom and kitchen to the ground floor, with three comfortable bedrooms and a family bathroom off landing to the first floor. Externally, the property offers a generous driveway, and a spacious, lawned garden. An internal viewing comes highly recommended.

Guide price £300,000 - £315,000

